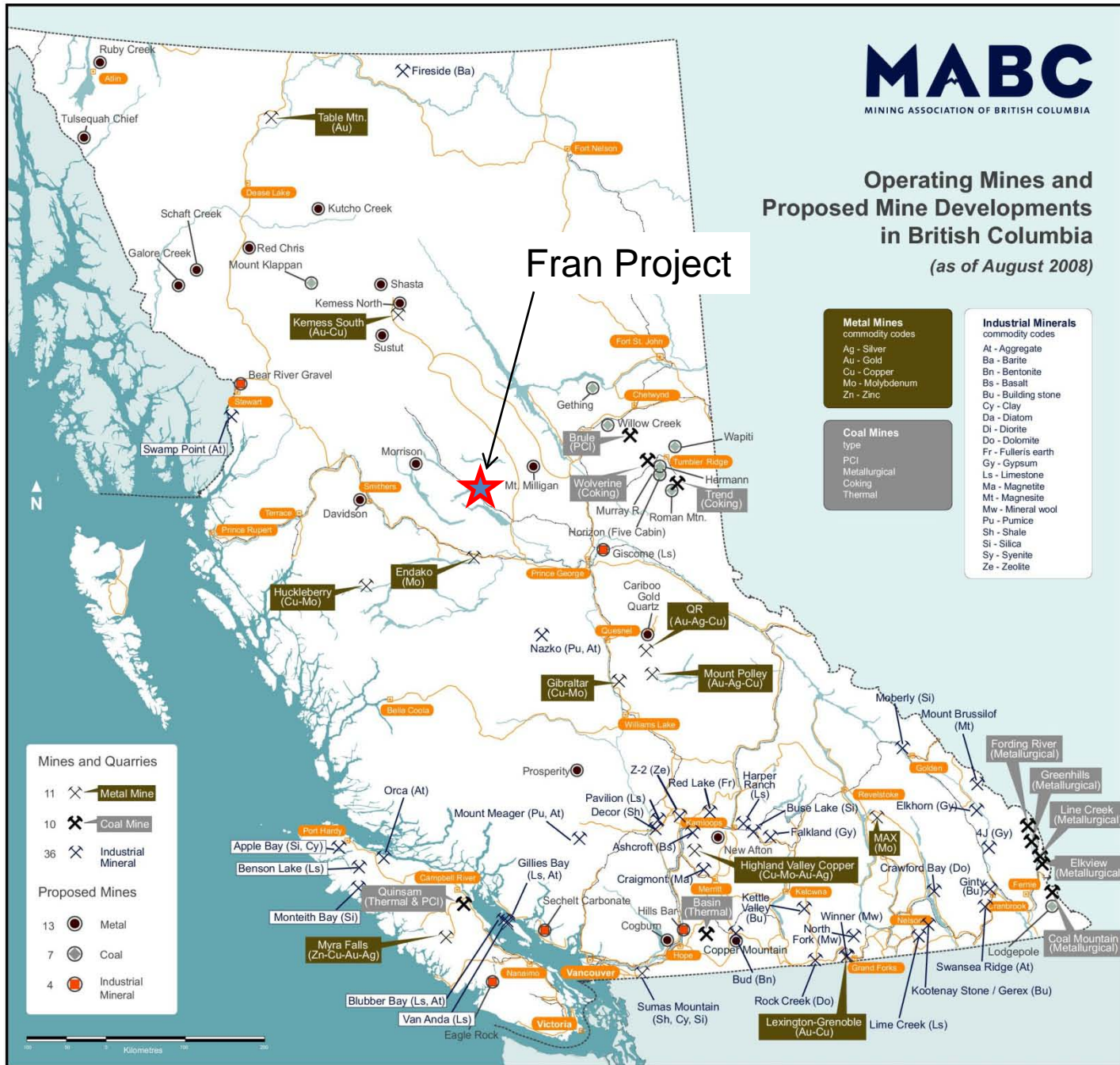




Operating Mines and Proposed Mine Developments in British Columbia (as of August 2008)

Fran Project



Metal Mines
commodity codes
Ag - Silver
Au - Gold
Cu - Copper
Mo - Molybdenum
Zn - Zinc

Coal Mines
type
PCI
Metallurgical
Coking
Thermal

Industrial Minerals
commodity codes
At - Aggregate
Ba - Barite
Bn - Bentonite
Bs - Basalt
Bu - Building stone
Cy - Clay
Da - Diatom
Di - Diorite
Do - Dolomite
Fr - Fuller's earth
Gy - Gypsum
Ls - Limestone
Ma - Magnetite
Mt - Magnesite
Mw - Mineral wool
Pu - Pumice
Sh - Shale
Si - Silica
Sy - Syenite
Ze - Zeolite

Mines and Quarries

11 Metal Mine
10 Coal Mine
36 Industrial Mineral

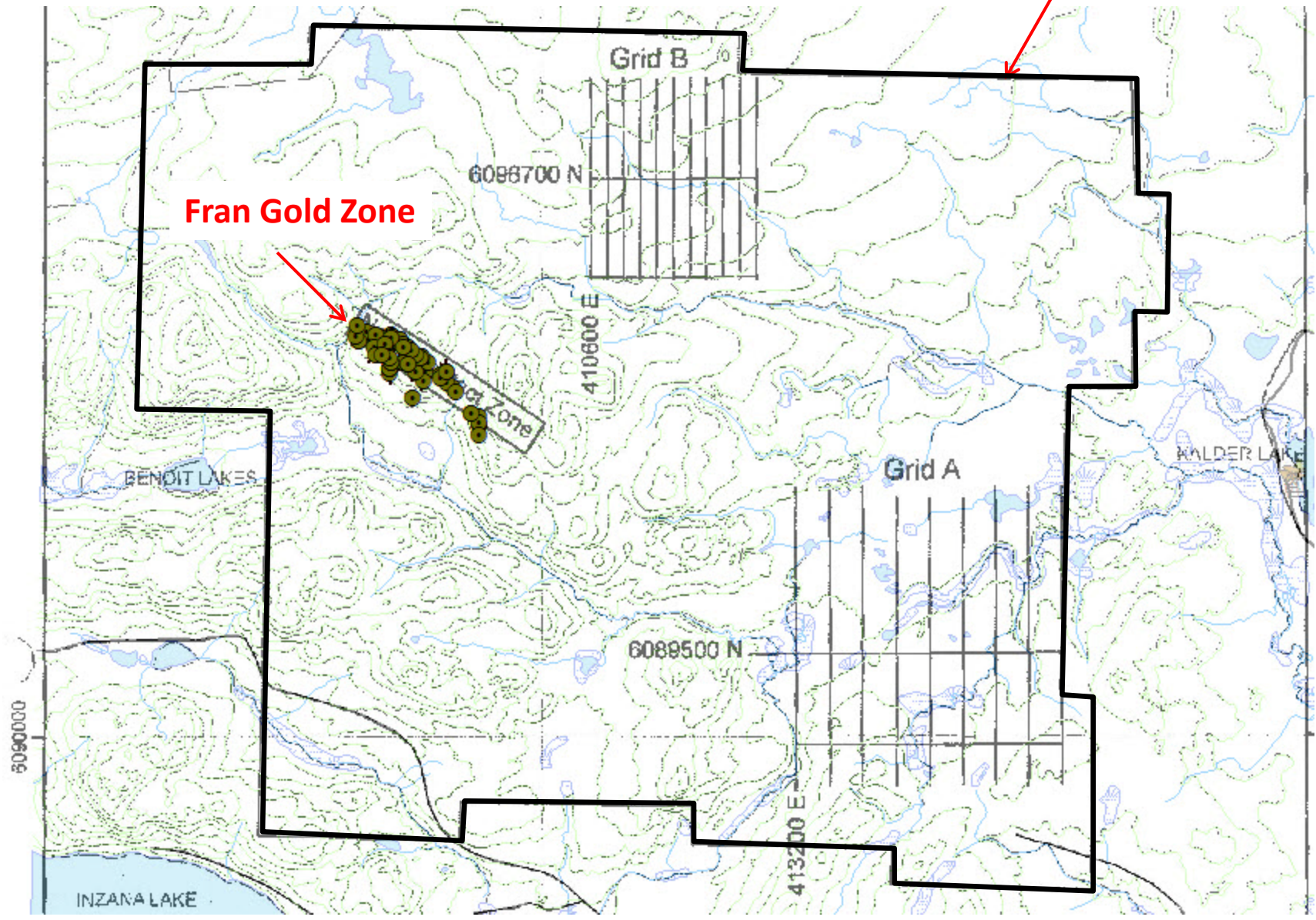
Proposed Mines

13 Metal
7 Coal
4 Industrial Mineral



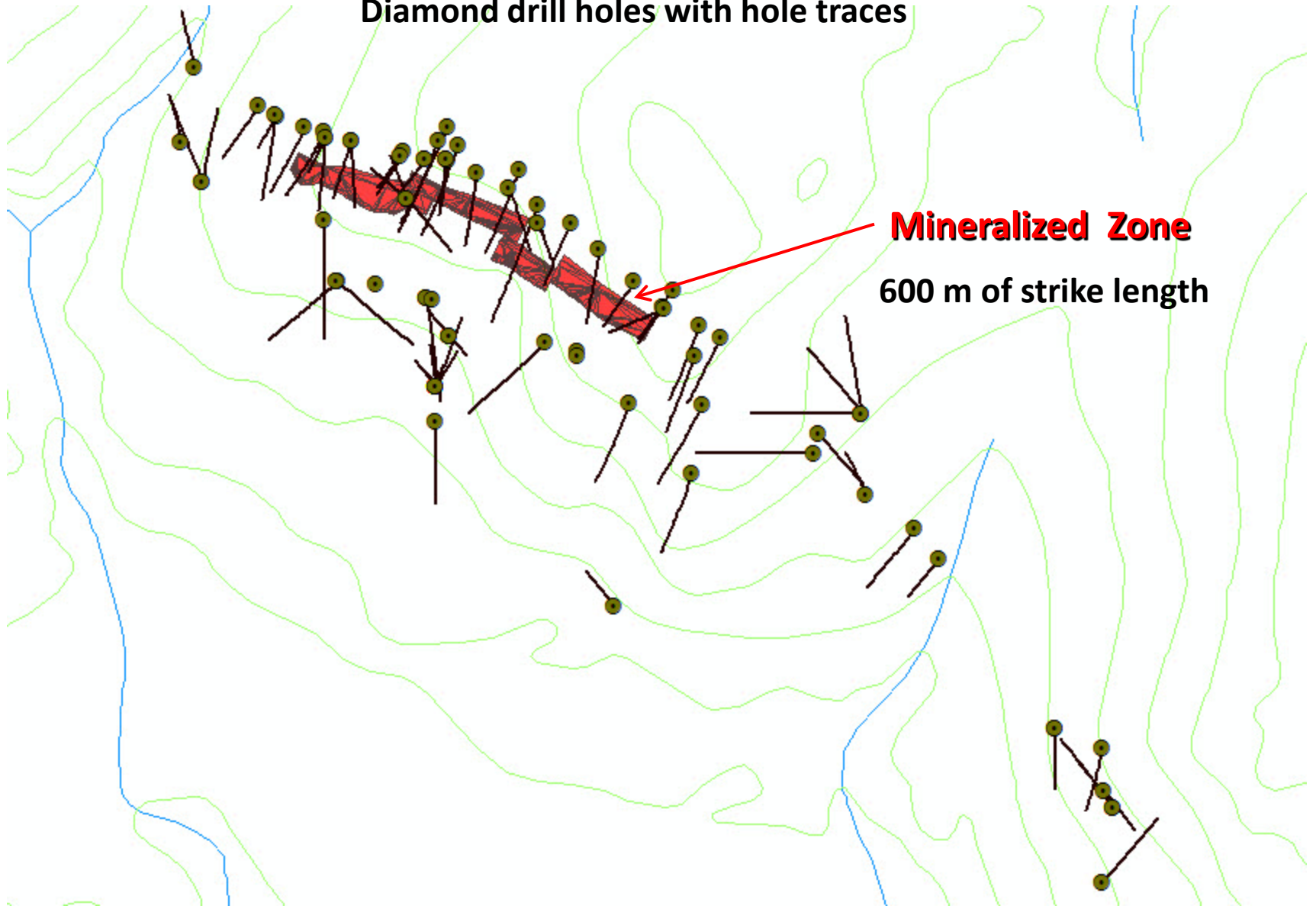
Fran Property – Central BC

Property Boundary



Planview

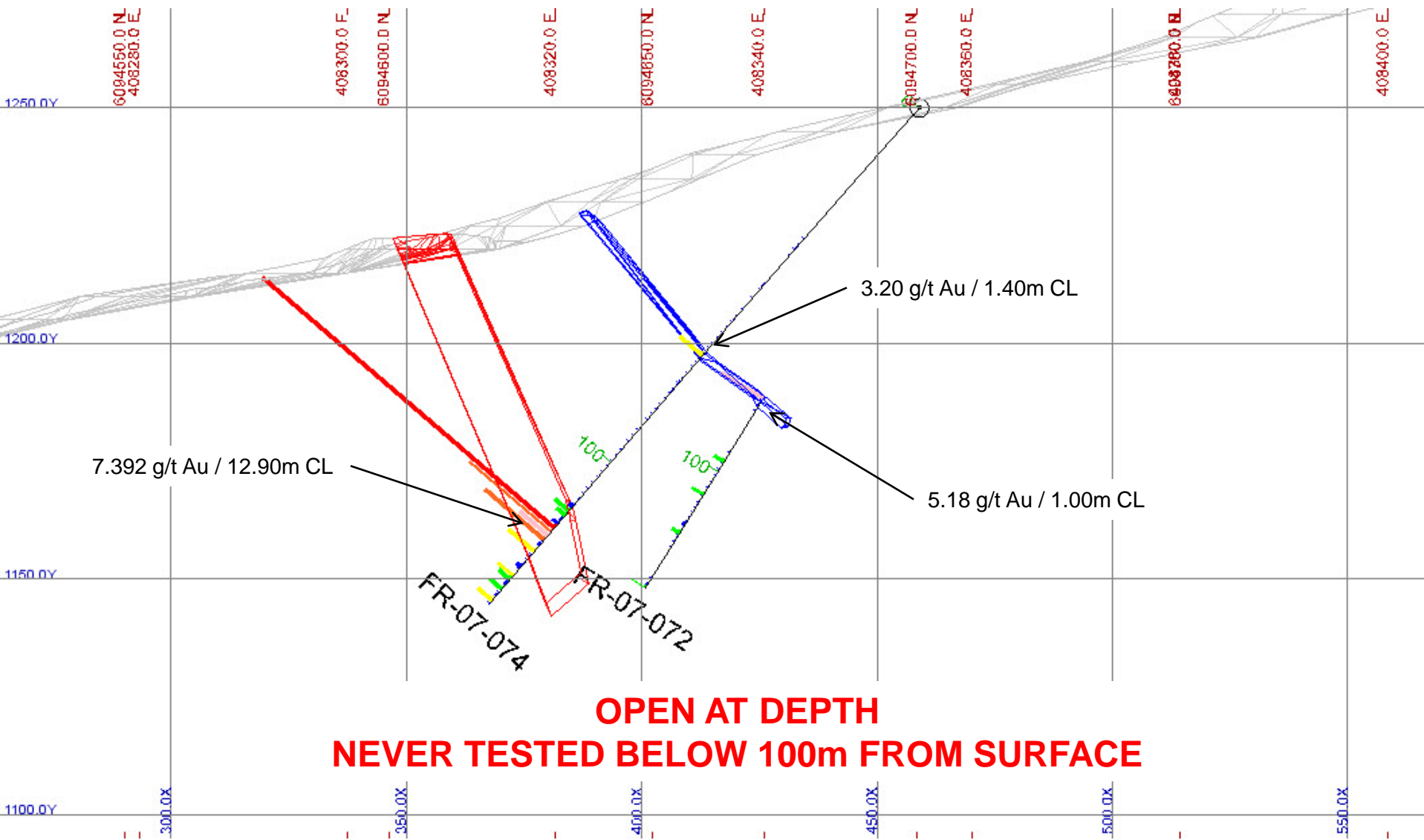
Diamond drill holes with hole traces

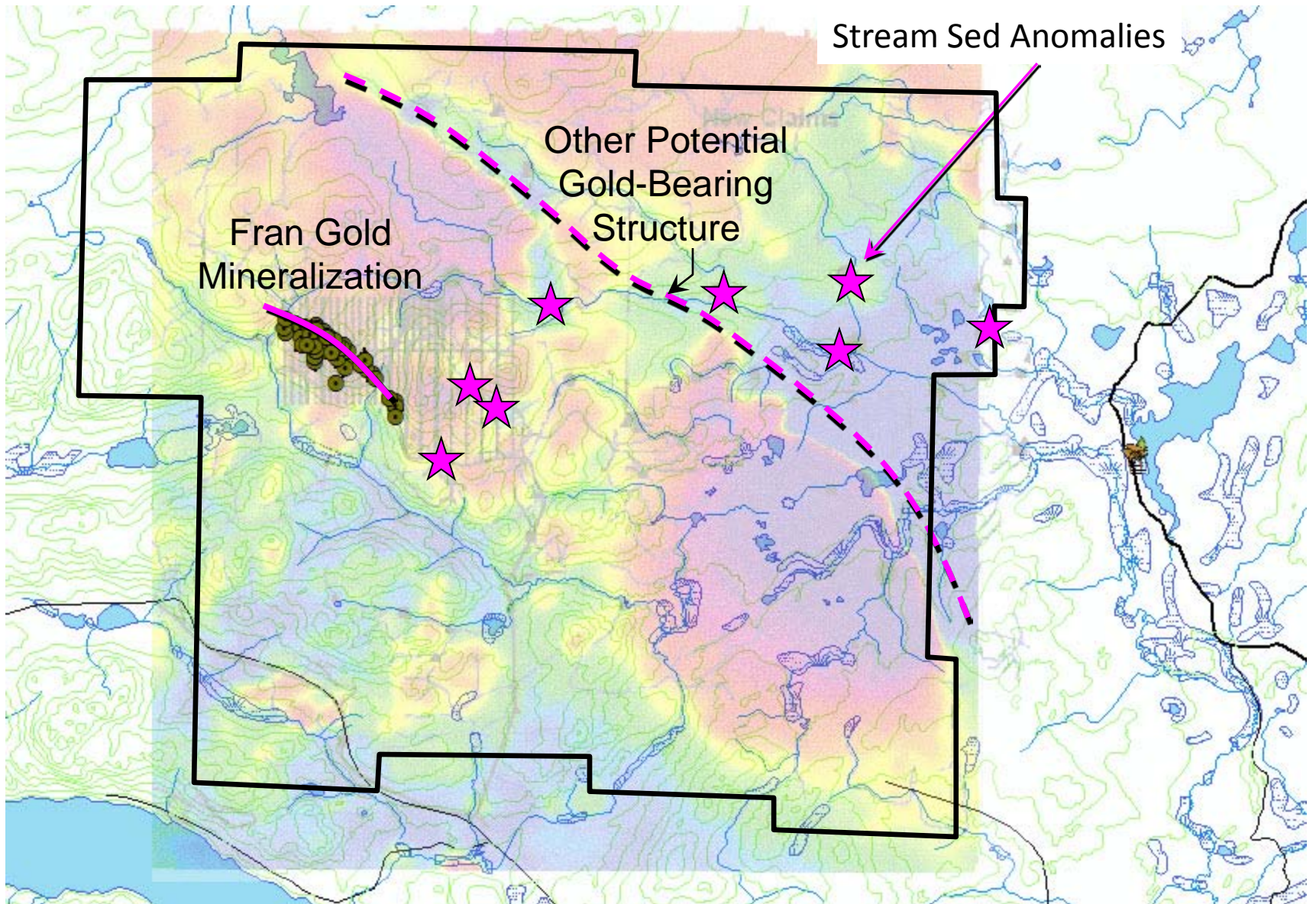


Mineralized Zone

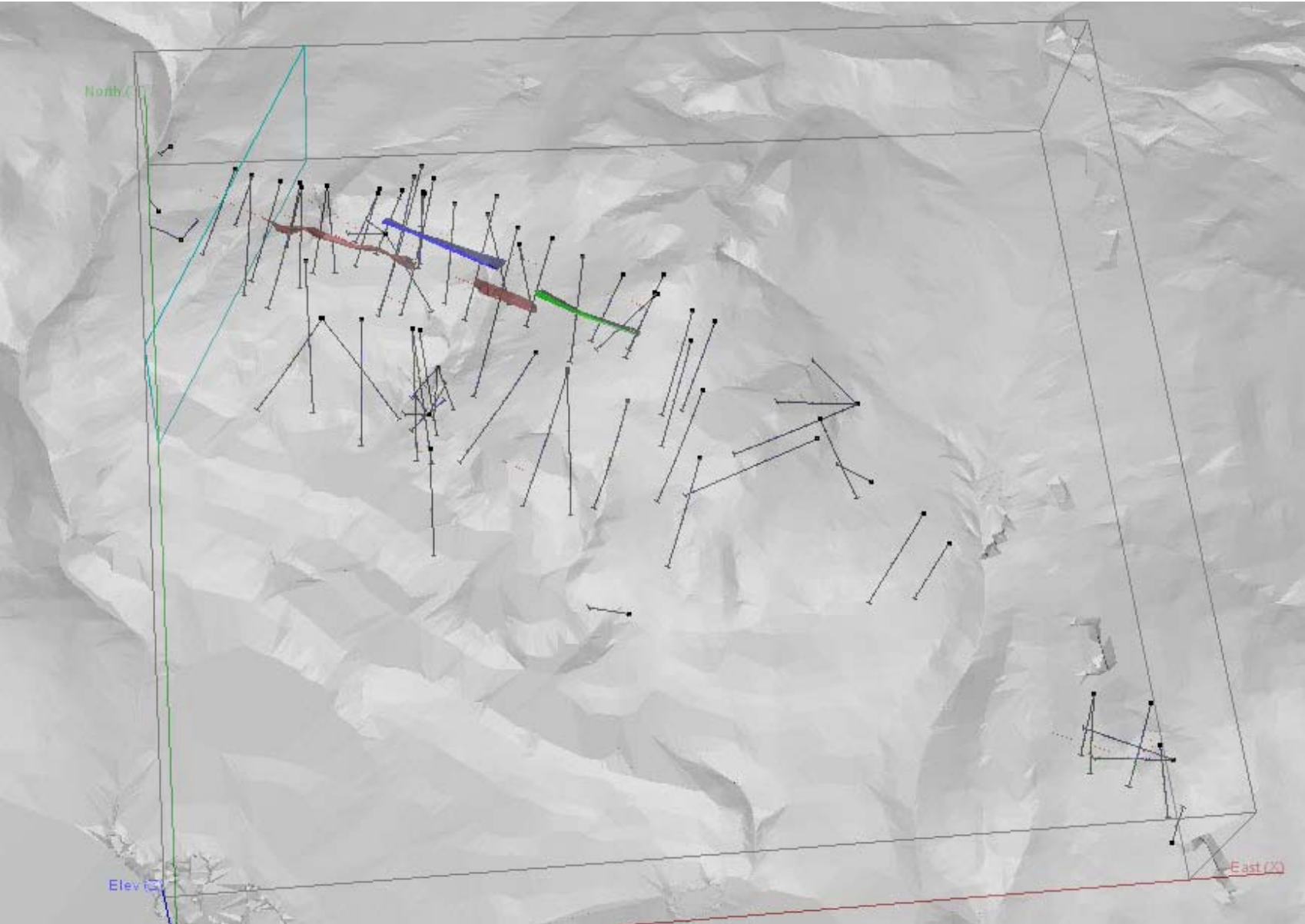
600 m of strike length

Vertical Cross section (Looking to the NW)





Planview – 3D topography with Zones and DDH traces



3D – XS with zones and DDH traces

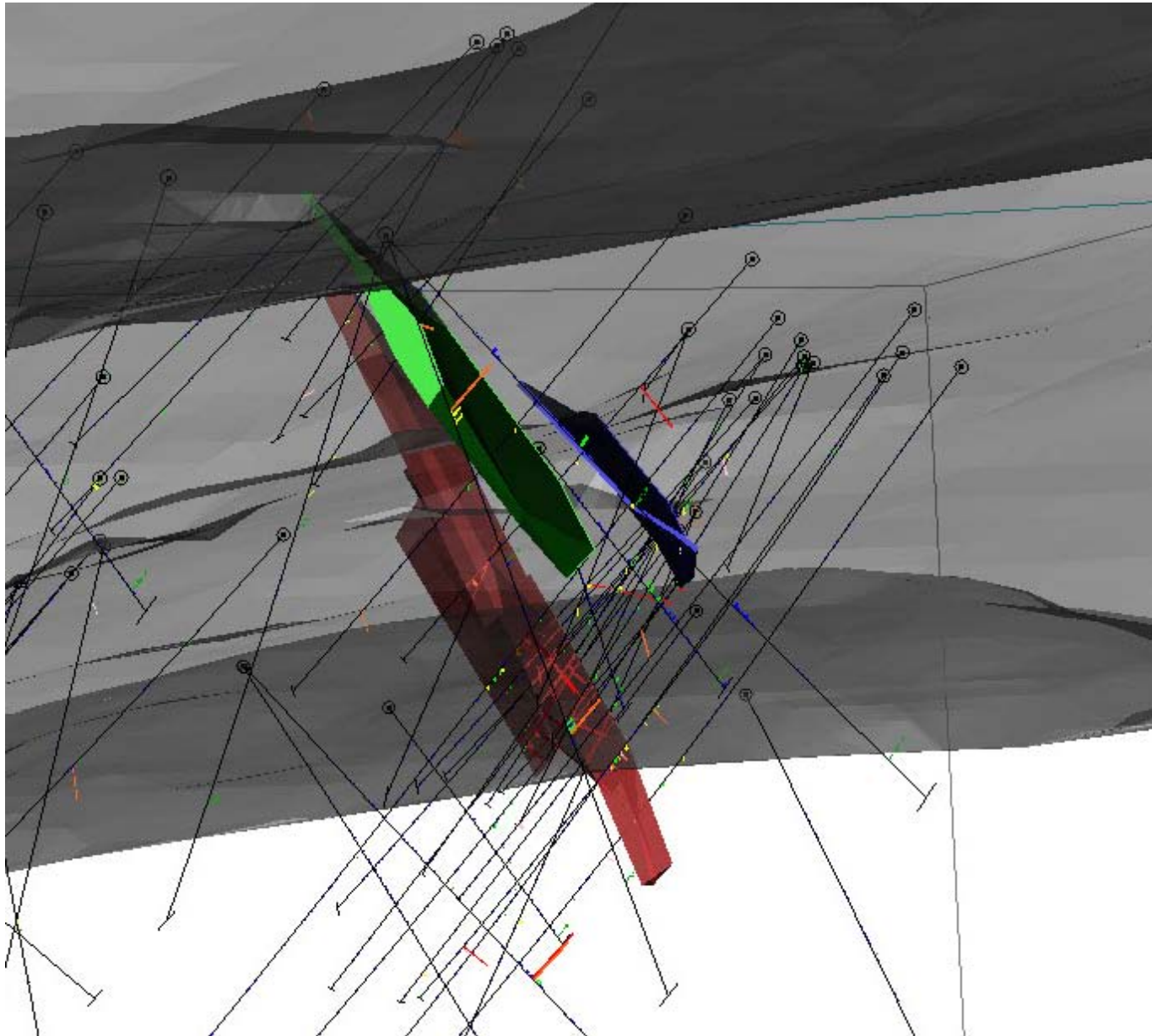


Table of Best Results from Main Zone

HOLE-ID	FROM (m)	TO (m)	LENGTH (m)	Au g/t
FR-06-049	109.70	112.10	2.40	17.03
FR-06-050	107.75	114.78	7.03	1.24
FR-06-053	79.80	80.30	0.50	16.70
FR-06-054	68.30	70.73	2.43	3.47
FR-06-055	80.40	89.95	9.55	8.21
FR-07-064	71.80	73.30	1.50	17.30
FR-07-068	145.30	147.10	1.80	3.34
FR-07-069	171.25	172.00	0.75	2.14
FR-07-070	146.75	155.12	8.37	1.66
FR-07-074	113.10	126.00	12.90	7.39
FR-07-075	118.10	124.50	6.40	1.24